

How to install the driver software for the Dual Channel Reader DCR16:

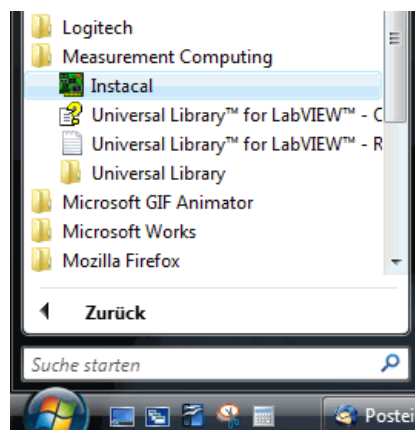
IMPORTANT: Do not plug in any USB-connector of devices from Pyro to your computer, before the driver installation has been finished successfully!

System requirements:

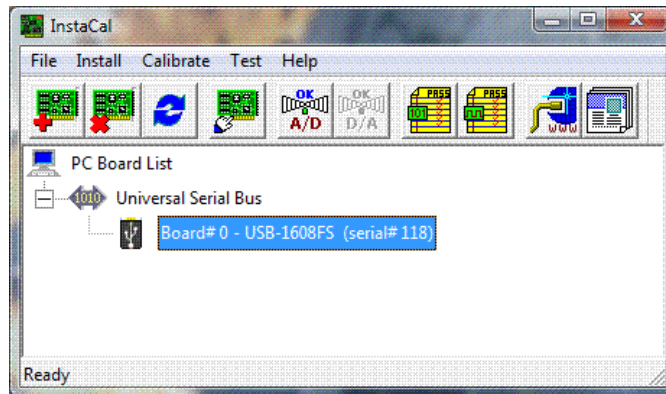
Windows 2000 with Service Pack 4 (SP4)
Windows XP with Service Pack 2 (SP2)
Windows VISTA 32-bit version

Installation procedure:

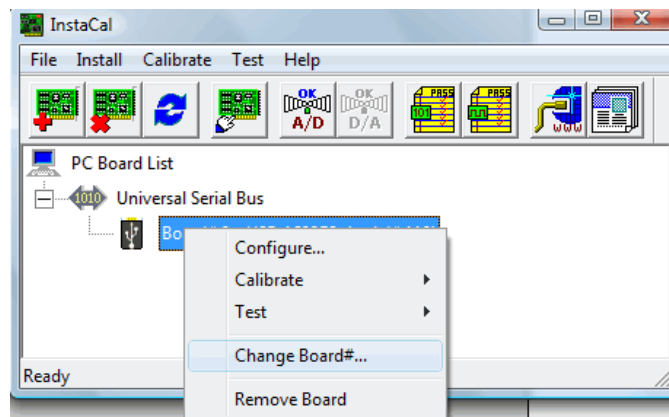
- 1) Download the „Driver Software DCR16“ (icalsetup.exe) from <http://www.pyro-science.com>
- 2) Start the downloaded file „icalsetup.exe“ in administrator mode
- 3) Follow the installer instructions, and leave the default values unchanged. If your operation system gives warnings about e.g. unregistered software, always click „OK“ or „trust“ and allow the installation process to continue.
- 4) After the installation process has finished, **restart** your PC.
- 5) Plug in your DCR16 into a USB port of your PC.
- 6) Go into the START-menu and start “Instacal” in the program group “Measurement Computing”:



- 7) The “InstaCal” window will be opened, there should be an entry like “Board#0 – USB-1608FS” showing that the DCR16 has been assigned board number 0 (indicated by ”Board#0”)



- 8) If the board number is different from 0 (e.g. “Board#1”), right-click on the entry “Board#0 – USB-1608FS” and select “Change Board#”. Change it to 0.



- 9) Close the “Instacal” window.
- 10) Start Profix, and select DCR16 in the settings.



Pyro Science e.K.
Hubertusstr. 35
52064 Aachen
Germany

info@pyro-science.com
<http://www.pyro-science.com>
Tel.: +49 (0)241 4004 555
Fax: +49 (0)241 4004 558